



NEMA™

NEMA SWITCH GEAR

MFG.OF FLP/WP ELECTRICAL EQUIPMENTS
AND PROCESS INSTRUMENTS

- PRESSURE GAUGES
- TEMPERATURE GAUGES
- LEVEL GAUGES & SWITCHES
- FLP/WP PRESSURE & TEMPERATURE SWITCHES
- RTD, THERMOCOUPLE & THERMOWELLS
- FLP/WP ELECTRICAL EQUIPMENTS



COMPANY PROFILE

NEMA Switch Gear came into being in the year 2007 and not so many years have been passed, still we have gained the position of topmost manufacturer of Electrical Industrial Equipment. Categories like Switch Gear, Junction Box, Clean Room Equipment, Lighting Fixture and Flame Proof Fan. We tend to develop the features in the product in compliance of client's needs and specifications. Excellent and superb work record has been maintained by us in our entire working career.

NEMA Switch Gear has stringent quality control and quality management processes having obtained ISO 9001:2015 certified company and all its products are tested and certified by the very reputed testing house of Government of India, M/s Electronics Regional Test Laboratory (**ERTL**) (EAST), Kolkata. Our all products are approved by ERTL (East), Kolkata as per **IS 60079-0:2011 & IS/IEC 60079-1:2007** for the safe application of hazardous area Div1 & div2.

NEMA Switch Gear products are approved by **Bureau of Indian Standards**.

The products of the company are approved by Chief Controller of Explosives & Petroleum & Explosives Safety Organization, Nagpur for **CCOE/PESO** approval for the use of zone 1 & zone 2 of gas group IIA/IIB/IIC hazardous areas coming under Petroleum Rules, 2002.

NEMA expanded its operations by **taking over Arvin Industries**, established in **1961** which is specialized in manufacturing of items for **Indian Naval Ships & Shipping Industries**.

NEAM Switch Gear has expanded its product portfolio by adding Process instruments like Pressure Gauge, Temperature Gauge, Flameproof & Weatherproof Pressure Switches, Level Gauge & Switches and accessories such as Diaphragm Seals, Manifolds, Gauge Saver, Gauge Cock, Snubber, Siphon etc.

USER INDUSTRIES

Defence
Oil exploration and production
Refineries and Petrochemicals Shipbuilding
Chemicals and Fertilizers
Power Generation - conventional and nuclear
Foundries
Boilers and Pressure Vessels
Heavy Engineering
Iron and Steel
Mining and Construction
Pharmaceuticals and Food Products
Sugar, Tea and Paper

INDEX

Pressure Gauge.....	3
Temperature Gauge & Elements.....	4
Level & Pressure Instruments.....	5
Flameproof Equipment.....	6-8



NPGS - SS PRECISION PG

Dial Size	: (2.5" / 4" / 6" / 10")
Range	: -1 to 0, 0-1 to 0-2500 Bar
Accuracy	: ±1% / CL 1 P.S.
Mounting	: Bottom / Lower Back / Center Back
Process Connection	: 1/2"-BSP / NPT Standard
Ingress Protection	: IP68
Execution	: Fillable / Dry / Filled
Bourdon Tube & Socket	: SS316L / MONEL -TIG WELDED
Case & Bezel	: SS304 / SS316 / Aluminium / DIN Style Case
Optional	: External Zero Adjustment, 0.5 % Acc, Case / Bezel Electro Plating



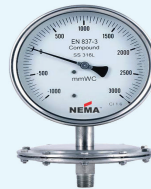
NDPG - DIAPHRAGM DIFFERENTIAL PG

Dial Size	: DN100 / DN150 (4" / 6")
Range	: 0-25mbar to 0-10 Bar
Accuracy	: ±1.6 % / CL 1 - Ascending F.S.
Mounting	: Bottom / Back
Process Connection	: 1/2"-BSP / NPT - Standard
Ingress Protection	: IP68
Execution	: Filled / Fillable / Dry
Body & Diaphragm	: SS316L / Monel / special alloys
Case & Bezel	: SS304 / 316 / Aluminium
Gasket	: Viton
Optional	: External Zero Adjustment, Electric Contact



NPGE - ALL SS PG, ELECTRIC CONTACT

Dial Size	: DN100 / DN150 (4" / 6")
Range	: -1 to 0, 0-1 to 0-1600 Bar
Accuracy	: ±1% / CL 1.0 F.S.
Mounting	: Bottom / Lower Back with standard safety glass window
Process Connection	: 1/2"-BSP / NPT Standard
Ingress Protection	: IP65
Execution	: Dry / Fillable
Electric Contact :	: Magnetic Contacts, NO / NC, NO NO, NC NC
Bourdon Tube & Socket	: SS316L / Monel - TIG welded
Welded Case & Bezel	: SS304 / 316



NPGL - ALL SS PG, DIAPHRAGM / CAPSULE LOW PRESSURE MODEL

Dial Size	: DN100 / DN150 (4" / 6")
Range	: 0-250mmwc to 0-10 bar
Accu. & Repeatability	: ±1% / CL 1 F.S.
Mounting	: Bottom
Process Connection	: 1/2"-BSP / NPT Standard
Execution	: Dry
Body	: SS316 (Machined Flange)
Diaphragm	: SS316 / Monel / Teflon / Inconel
Case & Bezel	: SS304 / 316 / Aluminium Die Cast
Note	: This Model is suitable for PTFE Lining
Optional	: External Zero Adjustments



NPGD - PRESSURE GAUGE WITH DIAPHRAGM SEAL

Dial Size	: DN100 / DN150 (4" / 6")
Range	: 0-250mmwc to 0-10 bar
Accu. & Repeatability	: ±1% / CL 1 F.S.
Mounting	: Bottom
Process Connection	: 1/2"-BSP / NPT Standard
Execution	: Dry
Body	: SS316 (Machined Flange)
Diaphragm	: SS316 / Monel / Teflon / Inconel
Case & Bezel	: SS304 / 316 / Aluminium Die Cast
Note	: This Model is suitable for PTFE Lining
Optional	: External Zero Adjustments

ACCESSORIES



GAUGE COCK



SIPHON



GAUGE SAVER



PULSATION DAMPENER/SNUBBER



FIVE WAY MANIFOLD VALVE



NTGB - BIMETAL EMPEPERATURE GAUGES

Dial Size	: DN40 / DN50 / DN63 / DN80 / DN100 / DN125 / DN150 / DN250 (1.5" / 2" / 2.5" / 3" / 4" / 4.5" / 6" / 10")
Temp. Range	: -100 to 600°C
Accuracy	: ± CL 1
Standard	: EN13190
Mounting	: Bottom / Center Back / Every angle Clamp : with External Zero Adjustment 1/4" / 3/8" / 1/2"-
Process Connection	: BSP / NPT, Special Connections
Ingress Protection	: IP65, Hermetically Sealed Encloser
Execution	: Dry / Fillable
Sensing Element	: Bimetal Helix
Case & Bezel	: SS304/316, - Stem / Probe TIG welded with Case / Aluminium Die Cast - 4" & 6" only



NTGG - GAS FILLED TEMPERATURE GAUGES

Dial Size Temp.	: DN100 / DN125 / DN150 / DN250 (4" / 4.5" / 6" / 10")
Range	: -100 to 650°
Accuracy	: ± CL 1
Standard	: EN13190
Mounting	: Bottom/Center Back/Every angle Clamp with : External Zero Adjustment 1/4",3/8",1/2"-
Process Connection	: BSP / NPT, Option with Anti Vibration spring
Ingress Protection	: IP65 , Options Hermetically Sealed Encloser
Execution	: Dry / Fillable
Sensing Element	: Bourdon Tube with Temperature Compensation
Case & Bezel	: SS304/316, - Stem / Probe TIG welded with Case / Aluminium Die Cast - 4" & 6" only



RTD - NIPPLE EXTENTION TYPE

Element/ Accuracy	: PT-100 /500 / 1000, Class A/ B
Temperature Range	: 200 400 I 600°C
No. of element/ Wire	: Simplex/ Duplex , 2 Wire/3 Wire/4Wire
Combi. Standard	: IEC-751 / DIN 43 760
Sheath Material	: SS316
Sheath Diameter	: 3 I 5 / 6 / 8 / 10 mm
Terminal Head Type	: Threaded Cover/ Hinged/ 2 screwed / Weather - : IP65/66/68 I Flame Proof/ Explosion Proof /
Terminal Head Material	: Die cast Aluminium/ SS3 04 /SS316
Cable Entry / Conduct	: 3/4" ET, 1/2" NPT , M20 (F)
Head Extension	: Nipple Extension assembly in ASTM A105 (plated) /SS3 04 /SS316
Head Extension Length	: 50 mm upto 250 mm
Immersion Length	: 50 mm upto 10000 mm
Process Connection	: 1/2" / 3/4" - BSP / NPT, M20 (M)
Option	: With Transmitter 4 ... 20 mA output, Single/ Double Compression Gland

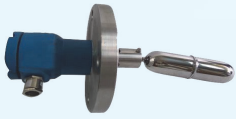


THERMOCOUPLE THREADED / FLANGE TYPE

Element	: Type-K / J / N / R / S / B : Mineral insulated / Element with ceramic insulator
Accuracy	: Standard to ISA &ANSI MC96.1
No. of Sensors	: Simplex / Duplex
Hot Junction	: Ungrounded / Grounded
Sheath Material	: INCONEL 600 / SS316
Insulator Diameter	: 3 / 5 / 6 / 8 / 10 / 12 mm
Terminal Head Type	: Weather-IP65/66/68/Flame Proof/Explosion Proof
Terminal Head Material	: Die cast Aluminum / SS304 /SS316
Conduct / Cable Entry	: 3/4" ET/NPT, 1/2" NPT , M20,
Immersion Length	: 50 mm upto 1500 mm
Process Connection	: Standard Flanges - Adjustable / Fixed Type
Head Extension Type	: Head with female threading
Protection Tube	: SS316/ SS346 / SS310 / SS316L / Inconel600
Protection Tube Size	: 10X1.5 /12X1.5 / PIPE 3/8"/1/2"/3/4"-SCH. 40 / 80
Options	: With Transmitter 4 to 20 m.A., Single / Double Compression Gland

THERMOWELLS





NLS - SIDE / TOP MOUNTED LEVEL SWITCH

Mounting	: SIDE MOUNT / TOP MOUNT
Specific Gravity	: 0.75
Operating Temp	: 10°C, 100°C..300°C (use cooling system with head) 12
Operating Pressure	: Bar
Switch Points / No. of	: 1No / 2 Nos / 3 Nos / 4 Nos
Process Connection	: 1" BSP / NPT / Standard Flanges/ 2" BSP/ SS 316
Ingress Protection	: Weather Proof / Flame Proof / Ex-Proof
Switch Type	: 1SPST & 1SPDT
Switch Rating	: 5A/230 VAC Micro Switch/0.5 A 110 VAC Reed Switch
Insertion Length	: 150-300 mm (Side) 150-3000 mm (Top)
Enclosure Protection	: Die Cast Aluminium / SS304
Wetted Parts Protection	: Non Magnetic SS316, Surface PTFE coating - PVDF



NLGM - MAGNETIC LEVEL GAUGE

Mounting	: REAR / SIDE / TOP MOUNT
Specific Gravity	: 0.75
Operating Temp	: -20 ... 120°C / -20 ... 300°C
Operating Pressure	: 10bar / 25 bar / 50 Bar / 80 Bar / 100 Bar
Process Connection	: 1/2" 1" NPT / Standard Flanges / Weld in
Indicator	: Rolling Flappers - Blue & White / Red & White
Wetted Parts Protection	: SS316 / SS316L / with NACE
Distance Center to	: 500 mm 6000 mm
Center Scale	: Aluminium / SS304 / SS316
Least Count	: As per requirement
Options	: Switches -1SPDT , Switch Points -1 / 2 / 3 / 4 Nos / Transmitter / Valve



NLGR - GLASS LEVEL GAUGE - REFLEX

Mounting	: LEFT / RIGHT SIDE / REAR SIDE / TOP SIDE
Operating Temp	: -20 ... 120°C / UPTO 240°C / UPTO 400°C
Operating Pressure	: 20bar / 35 bar / 65 Bar / 80 Bar / 100Bar / 200 bar
Process Connection	: 1/2" 1" NPT / Standard Flanges / Weld in
Indicator	: Gauge Glass - Borosilicate / Klinger
Wetted Parts	: SS304 / SS316 / CS105
Distance Center to	: 500 mm 6000 mm
Center Scale	: Aluminium / SS304 / SS316
Least Count	: As per requirement
Options	: Needle/Ball Valves/Flanges with Vent/Drain Port, Auto shut of valve



NLGT - GLASS LEVEL GAUGE - TUBULAR

Mounting	: REAR / LEFT / RIGHT SIDE / TOP SIDE
Operating Temp	: -10 ... 100°
Operating Pressure	: Upto 10 Bar
Process Connection	: 1/2" 1" BSP/ NPT / Standard Flanges
Indicator	: Borosilicate Glass Tube / Plexi Glass
Wetted Parts	: SS304 / SS316 / CS105
Distance Center to Center	: 500 mm 2000 mm
Scale	: Aluminium / SS304 / SS316
Least Count	: As per requirement
Options	: Drain / Vent with ball Valves



NWPS - WEATHERPROOF PRESSURE SWITCHES

Features	: Fixed/Field Adjustable(External)
Accuracy	: ± 1% / CL 1
Repeatability	: ±0.5% /CL 0.5, On Raising /On Falling
Mounting	: Bottom / Back Panel / 2"pipe Mounting Bracket
Enclosure	: Die Cast Aluminium -Weather Proof - IP68
Wetted Parts	: Bottom Body , Diaphragm, SS316/ Monel / Inconel / PTFE
Process Connection	: 1/4" BSP(F)
Max. Process Temp.	: 150°C
Switch Type & Rating	: 1SPDT, 2SPDT, 5A / 250 VAC / 0.2A 24VDC Micro Switch
Ranges	: 10mbar60 bar , -1.... 400mbar
Differential	: 5 to 15%
Cable Entry	: PG13.5 (std)/Single / Double Compression Gland

FLP/WP TRANSMITTERS



Pressure Transmitters	: -1 1000 Bar, 4 ...20mA 0.....10 V, 8 ... 32VDC, 1/4" BSP(M), Operational Temperature : -40 ... 100°C,
-----------------------	--



**NJB 40102 (IIA IIB) NJB 80102 (IIC)
FLP/WP DIRECT ENTRY ON-OFF
PUSH BUTTON**



**NPB 40201 (IIA IIB) NPB 80201 (IIC)
FLP/WP ONLY ON OR OFF PUSH BUTTON**



**NPB 40202 (IIA IIB) NPB 80202 (IIC)
FLP/WP ON-OFF PUSH BUTTON**



**NPB 40203 (IIA IIB) NPB 80203 (IIC)
FLP/WP REVERSE-FORWARD-STOP
PUSH BUTTON**



**NPB 40204 (IIA IIB) NPB 80204 (IIC)
FLP/WP START-STOP-INDICATING
PUSH BUTTON**



**NPB 40207 (IIA IIB) NPB 80207 (IIC)
FLP/WP ON-OFF ROTARY SWITCH
16A /25A/32A 230V/440V AC**



**FIRE ALARM STATION
NPB 40208 (IIA IIB) NPB 80208 (IIC)
MANUAL CALL POINT**



**FLP/WP TEMPERATURE INDICATOR
NPB40209 (IIA IIB) NPB 80209 (IIC)**



**FLP/WP ELECTRIC/GONG BELL
NPB 40210 (IIA IIB) NPB 80210 (IIC)
230V , 110V AC**



**NPB 40211 (IIA IIB) NPB 80211 (IIC)
FLP/WP SWITCH SOCKET
16A /25A/32A 230V/440V AC
3 PIN / 4 PIN / 5 PIN**



**FLP/WP HOOTER
NPB 40212 (IIA IIB) NPB 80212 (IIC)
230V AC / 24V DC**



**FLP/WP ACCEPT HOOTER
NPB 40212 (IIA IIB) NPB 80212 (IIC)
230V AC / 24V DC**



**NJB 40080 (IIA,IIB) NJB 80080 (IIC)
FLP/WP 80MM JUNCTION BOX**



**NJB 40100 (IIA,IIB) NJB 80100 (IIC)
FLP/WP 100MM JUNCTION BOX**



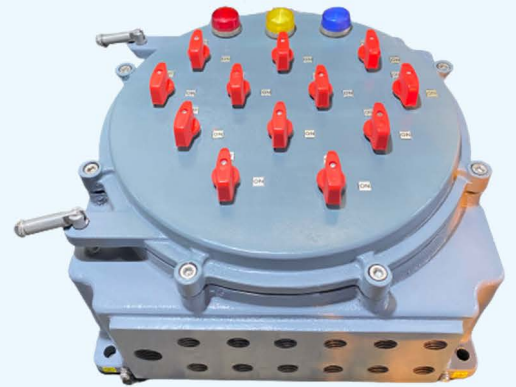
**NJB 40130 (IIA,IIB) NJB 80130 (IIC)
FLP/WP 130MM JUNCTION BOX**



**NJB 40200 (IIA,IIB) NJB 80200 (IIC)
FLP/WP 200MM JUNCTION BOX**



**NJB 40250 (IIA,IIB) NJB 80250 (IIC)
FLP/WP 250MM JUNCTION BOX**



**NJB 40350 (IIA,IIB) NJB 80350 (IIC)
FLP/WP 350MM JUNCTION BOX**



FLP/WP CLEAN ROOM FITTINGS

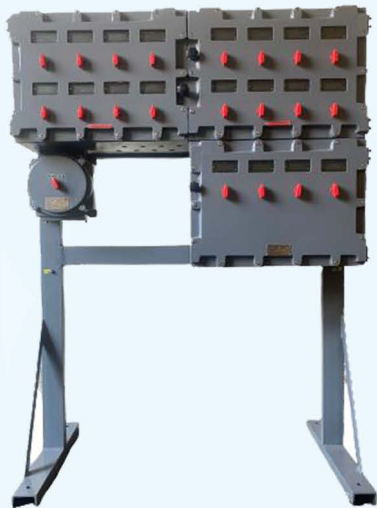


**NLCS 80400 (IIC)
NLCS 40400 (IIA, IIB)
FLP/WP LCS WITH AMMETER & PB**

**NJB 40130 (IIA, IIB) NJB 80130 (IIC)
FLP/WP 130mm JUNCTION BOX
WITH 6 Nos. PUSH BUTTON**

**NLCS 40400 (IIA, IIB)
NLCS 80400 (IIC)
DOL STARTER FLP/WP**

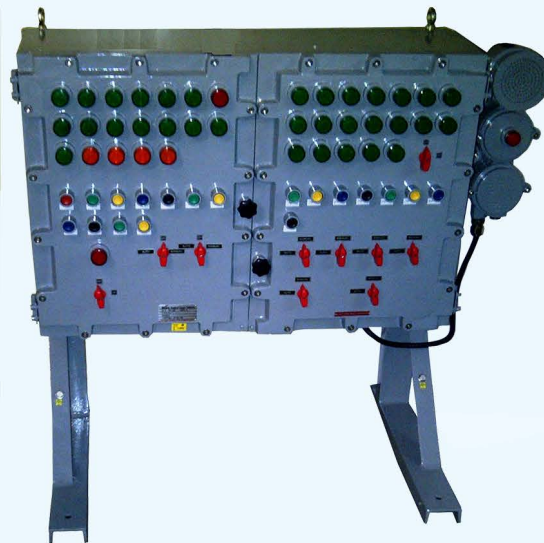
**NJB 40200 (IIA/IIB) NJB 80200 (IIC)
FLP/WP 63A SWITCH SOCKET
WITH PLUG TOP**



FLP/WP Distribution Board

FLP/WP Control panel with Display

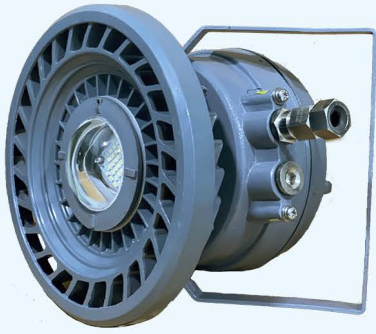
FLP/WP Annunciator Control Panel



**FLP/WP Multiway Switch
Socket with Trolley**

FLP/WP Operating Panel

FLP/WP Control panel with HMI Display



FLP/WP LED Well Glass
For IIA / IIB / IIC
UPTO 72 WATTS



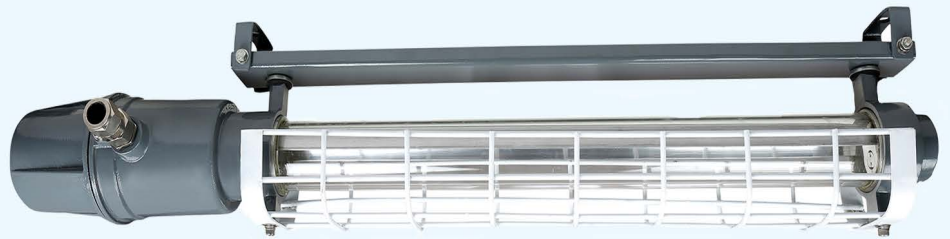
FLP/WP Well Glass
NLW40250(IIA / IIB) NLW 80250 (IIC)
UPTO 100 WATTS



FLP/WP REACTOR VESSEL Lamp
NRV 40100 (IIA / IIB) NRV 80100 (IIC)
100W GLS / 23W CFL / UPTO 15W LED



FLP/WP Hand Lamp
NHL 40100 (IIA / IIB) NHL 80100 (IIC)
100W GLS 230V/24V AC / UPTO 15W LED



FLP/WP Tube Light FIXTURE
NLT 40140 (IIA / IIB)
1 X 40W / 2 X 40W / UPTO 1 X 22W / 2 X 22W LED



FLP/WP WELLGLASS
NLW 40200 (IIA IIB) NLW 80200 (IIC)
200W / 125W HPMV / 70W MH / 70W HPSV
160W MLL/ 2 X23W CFL / UPTO 72W LED



FLP/WP Flood Light
NFL 40400 (IIA / IIB) NFL 80400 (IIC)
UPTO 180W LED



FLP/WP BULK HEAD FIXTURE
NBH 40200 (IIA / IIB)
UPTO 50W LED



FLP/WP SMOKE DETECTOR
 NJB 40130 (IIA/IIB)
 NJB 80130 (IIC)



FLP/WP AVIATION LIGHT FITTING
 NLW 40200 (IIA/IIB)
 NLW 80200(IIC)



FLP/WP HOOTER WITH FLASHER
 NJB 40130 (IIA/IIB)
 NJB 80130 (IIC)



FLP/WP TELEPHONE INSTRUMENT
 NLCS 40200 (IIA/IIB)
 NLCS 80200 (IIC)



FLP/WP CLEAN ROOM GPS WATCH
 NLTC 40236-B (IIA/IIB)



FLP/WP EMERGENCY LIGHT
 NBH 40200 (IIA/IIB)



FLP/WP LIMIT SWITCH (ROLLER/LONG LEVER)
 NLS 40010 (IIA/IIB) NLS 80010 (IIC)



FLP/WP CRANE BRAKE



FLP/WP EXHAUST FAN
 RANGE :- 9" TO 24"



FLP/WP PEDESTAL FAN / WALL MOUNT FAN
 RANGE:- 18" TO 30"



FLP/WP CABLE GLANDS AND CONDUIT ACCESSORIES



NEMA™

NEMA SWITCH GEAR

HEAD OFFICE :

301 Harisadn Mamledarwadi Road,
Malad(W) Mumbai-400064,
Maharashtra

For Weather & Flameproof :

✉ info@nemaswitchgear.com
harsh@nemaswitchgear.com
☎ 9619953221 / 8980018100

MANUFACTURING UNIT :

C1 B-2425, 3rd Phase, GIDC,
Vapi 396 195, Gujarat
Tel.: 0260-2425661 / 662

For Instrumentation :

✉ instrument@nemaswitchgear.com
harsh@nemaswitchgear.com
☎ 9920513952 / 9320044206